

Description

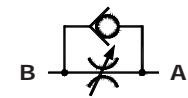
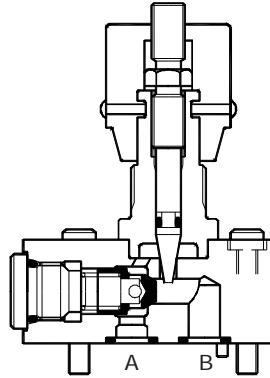
The Valve allows accurate adjustment of flow by throttling action. The throttling can be varied by rotation of the Hand knob.

The valve is also equipped with a built - in check valve for free reverse flow.

The mounting Interface conforms to Flutec standard.

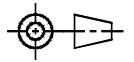


Section

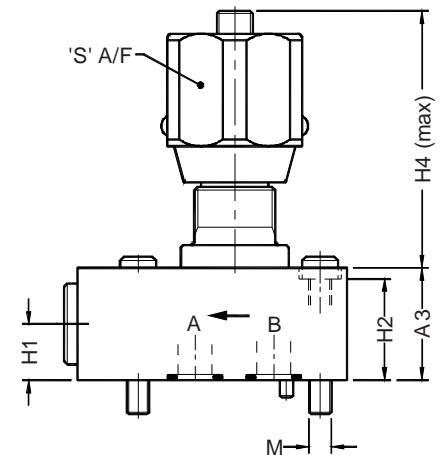


Hydraulic Symbol

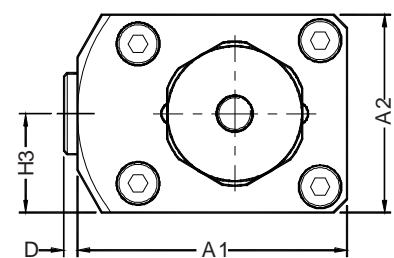
Unit Dimensions



Ordering Code	A1	A2	A3	H1	H2	H3	H4 (max)	D	S
TCMH06-2.0	62	46.0	25	12.5	21	23.0	64.0	3	30
TCMH08-2.0	64	51.0	30	15.0	21	25.5	64.0	3	30
TCMH10-2.0	78	57.5	40	22.5	36	28.7	81.5	3	41
TCMH15-2.0	112	70.0	45	22.5	43	35.0	81.5	3	41
TCMH20-2.0	132	76.5	50	25.0	48	38.2	120.0	4	50
TCMH25-2.0	162	100.0	65	35.0	55	50.0	120.0	4	50
TCMH30-2.0	190	115.0	70	35.0	62	57.5	120.0	4	50



Ordering Code	Valve fixing Screws	Grade
TCMH06-2.0	M6 x 1.0 x 30 Long, 4 nos	10.9
TCMH08-2.0	M6 x 1.0 x 30 Long, 4 nos	10.9
TCMH10-2.0	M6 x 1.0 x 45 Long, 4 nos	10.9
TCMH15-2.0	M8 x 1.25 x 55 Long, 6 nos	10.9
TCMH20-2.0	M8 x 1.25 x 60 Long, 6 nos	10.9
TCMH25-2.0	M10 x 1.5 x 70 Long, 6 nos	10.9
TCMH30-2.0	M12 x 1.75 x 80 Long, 6 nos.	10.9



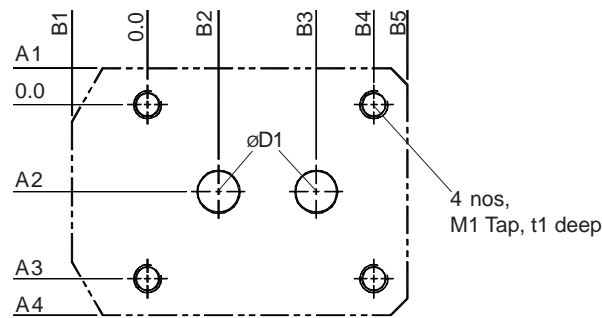
Throttle/Check Valves, Sub-plate mounting, Model : TCMH



the right connection
the right environment

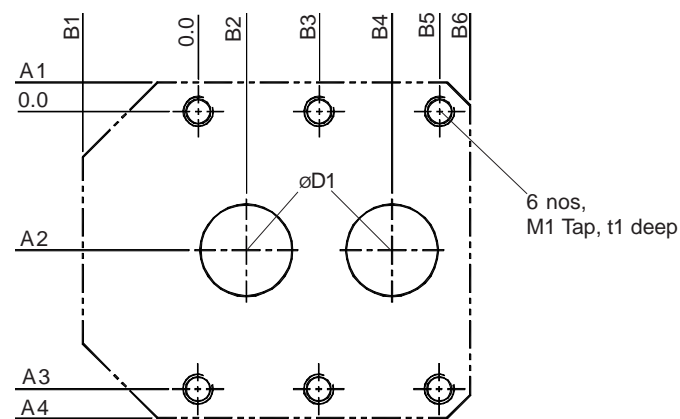
Ref. No : H06106 Release March 2018 (Dimensions in mm)

Interface Details for NG - 06, NG - 08 and NG - 10 as per Flutec standard.



Ordering Code	ØD1	A1	A2	A3	A4	B1	B2	B3	B4	B5	M1	t1
TCMH06-2.0	7	-6.25	16.75	33.5	39.75	-21.0	5	30.5	35.0	41	M6x1.0	10
TCMH08-2.0	10	-6.50	19.00	38.0	44.50	-23.0	4	29.5	33.5	41	M6x1.0	10
TCMH10-2.0	13	-6.50	22.20	44.5	51.00	-31.0	4	34.0	38.0	47	M6x1.0	10

Interface Details for NG - 15, 20, 25 and NG - 30 as per Flutec standard.



Ordering Code	ØD1	A1	A2	A3	A4	B1	B2	B3	B4	B5	B6	M1	t1
TCMH15-2.0	17.0	-8.00	27.0	54.0	62.0	-36.0	10.6	38.0	64.6	76.0	84.5	M8x1.25	14
TCMH20-2.0	22.0	-8.25	30.0	60.0	68.2	-26.5	19.0	47.5	76.0	95.0	105.5	M8x1.25	14
TCMH25-2.0	28.5	-12.0	38.0	76.0	88.0	-33.0	19.9	60.0	99.4	120.0	129.0	M10x1.50	17
TCMH30-2.0	35.0	-11.5	46.0	92.0	103.5	-33.5	24.2	71.5	119.2	143.0	156.5	M12x1.75	20

Ordering Code

Construction Conical throttling spool with rotation of hand knob
for flow adjustment. Poppet valve for free reverse flow.

Mounting style Sub-plate mounting

Mounting Interface As per Flutec standard

Mounting position Optional

Flow direction Adjustable throttled flow from A to B,
free flow from B to A as indicated on valve body.

Operating pressure 315 bar

Hydraulic medium Mineral Oil.

Viscosity range 10 cSt to 380 cSt.

Fluid temperature range -20 °C to +80 °C

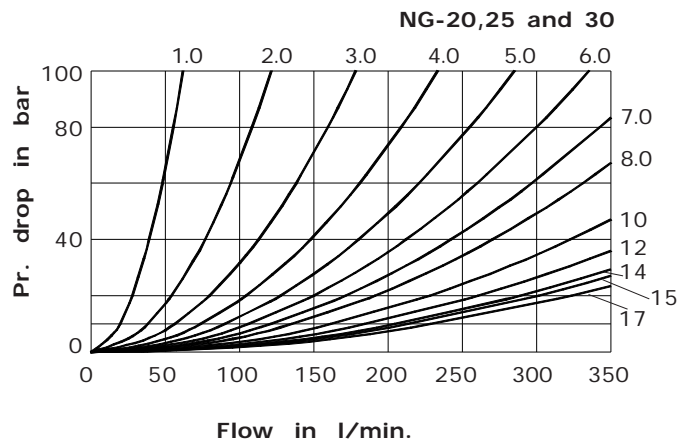
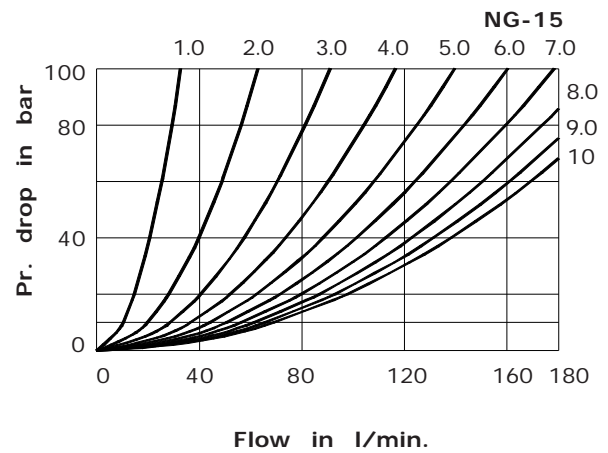
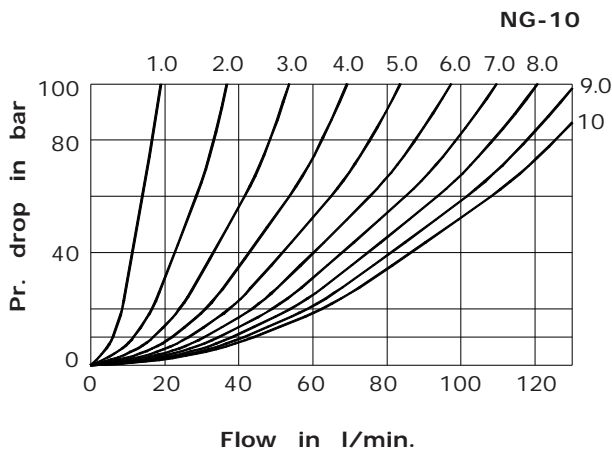
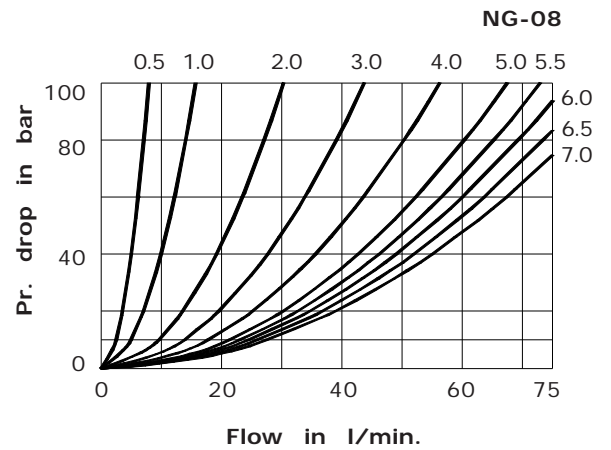
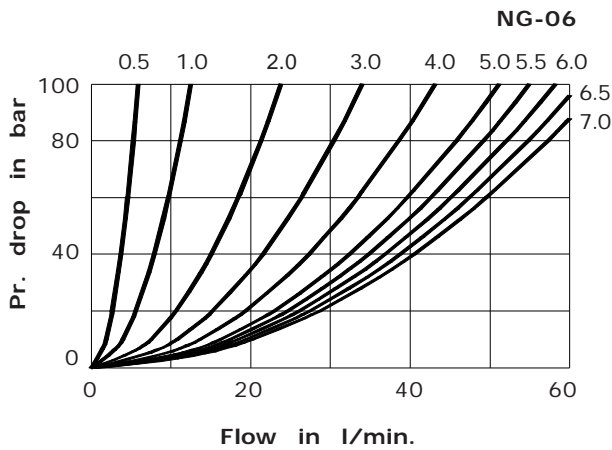
Fluid Cleanliness requirement As per ISO 19/16 or better.

Nom. flow handling capacity Refer graphs

Expected performance Curves

Oil used : ISO VG 68,
 Viscosity : 68 cSt @ 40 °C
 Direction of flow : A to B

Graphs below shows
 Throttle position (No.of turns) from closed position



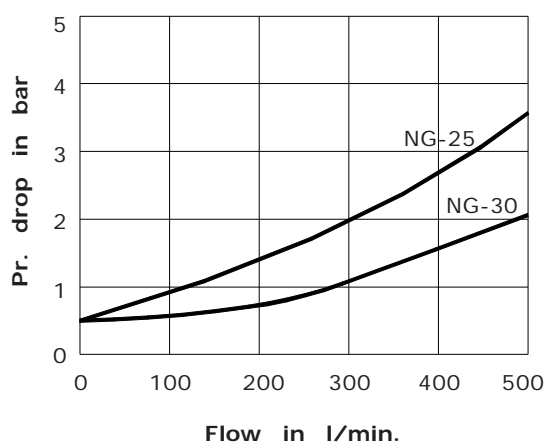
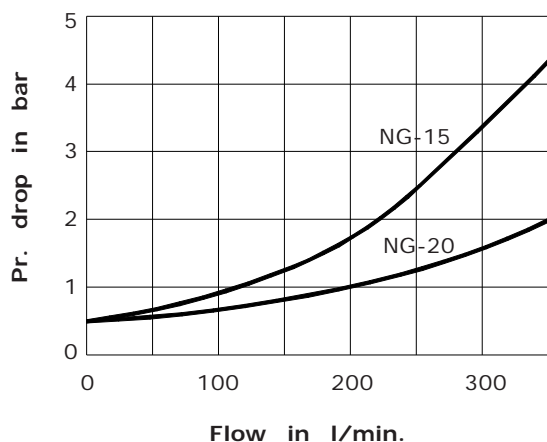
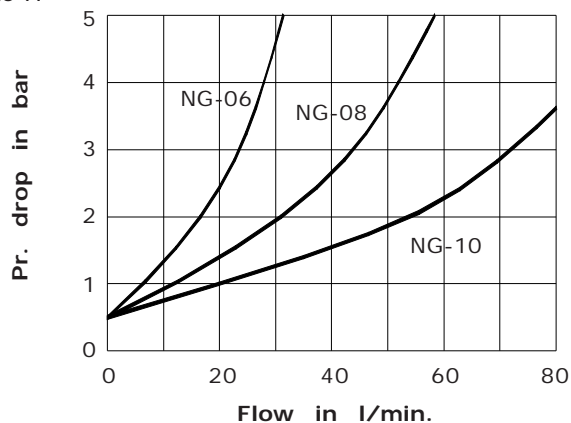
Throttle/Check Valves, Sub-plate mounting, Model : TCMH



the right connection
the right environment

Ref. No : H06106 Release March 2018 (Dimensions in mm)

Direction of free flow from B' to A'



Ordering Code

